

SEM 3D in 5 minutes: Mountains Map 7.4

Jari T.T. Leskinen

SIB Labs/ University of Eastern Finland

October 24 2018

5 eurocent coin

Selected detail:

One star from the heads side



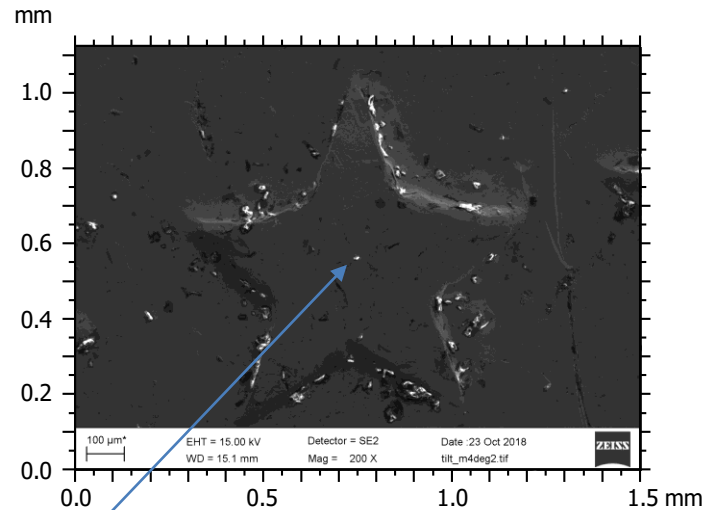
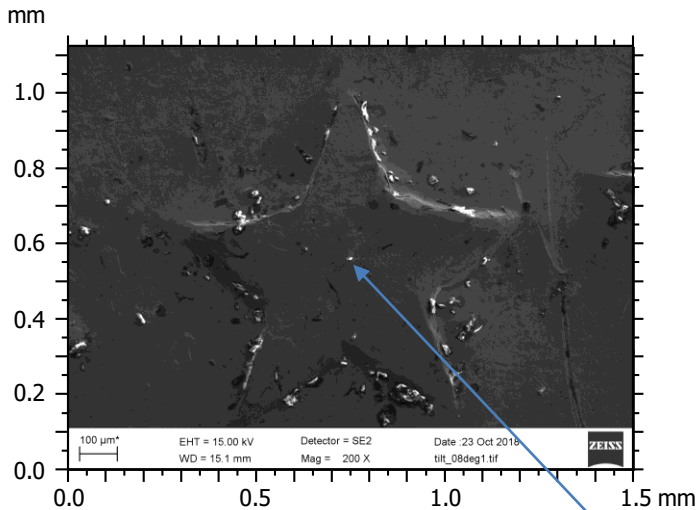
One object, Two images

- Eucentric tilt:

+8°

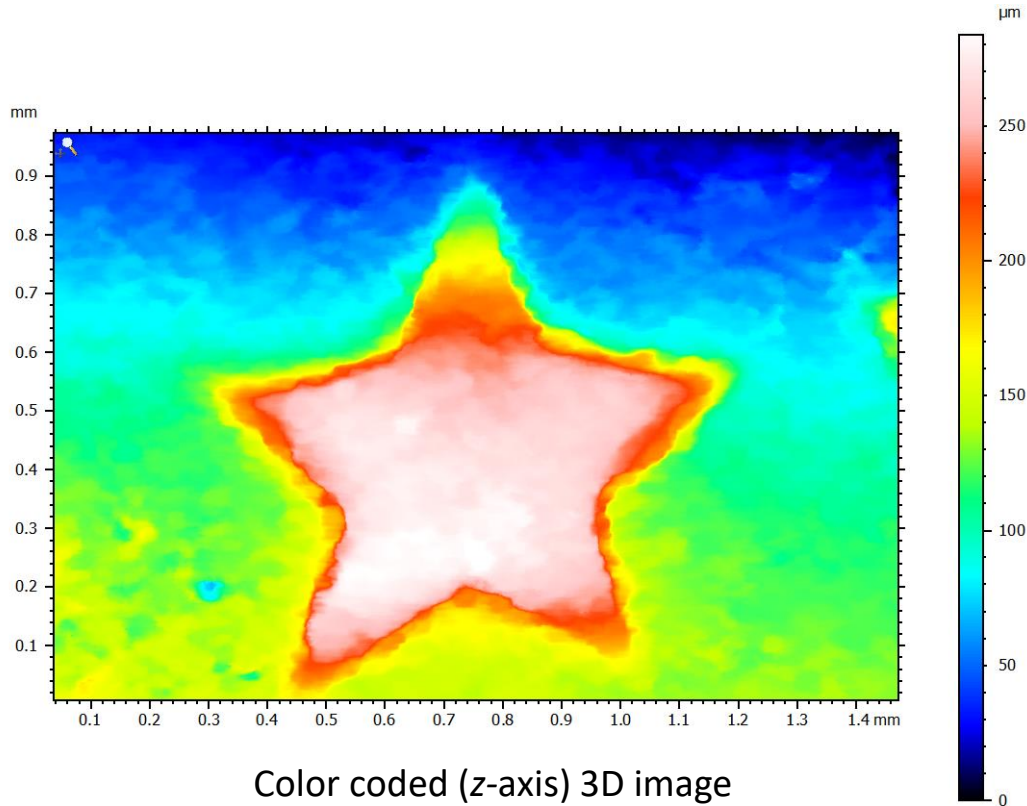
...and

-4° => Total tilt angle = 12°

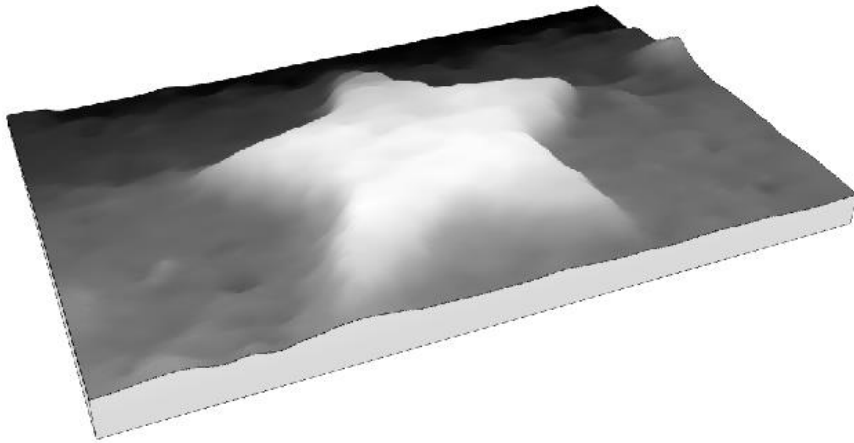


An Easily recognizable object for eucentric tilt axis!

Stereoscopic reconstruction using Mountains Map software tools in minutes



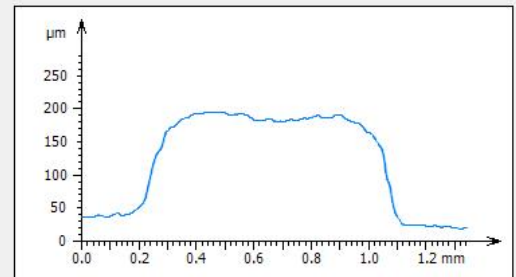
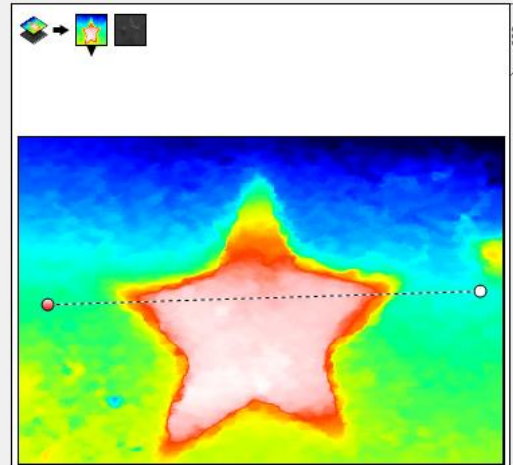
3D object from 2D images



Easy metrology:

- Surface Profile/Roughness
- Object size
- Orientation

Operator: Extract profile



Several applications

- Biological structures
- Catalytic materials
- Corroded surfaces
- Electronic components and contacts
- Engineered surfaces
- Pharmaceuticals
- Weldings
- Your specimen?

contact: email: jari.leskinen@uef.fi

tel. +358-50-308 99 45